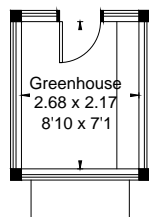
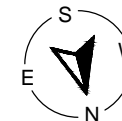
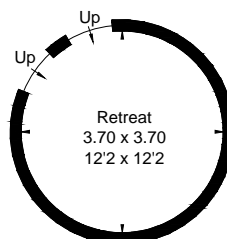


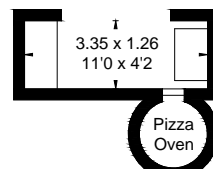
Approximate Floor Area = 157.3 sq m / 1693 sq ft
 Outbuildings = 105.6 sq m / 1137 sq ft (Excluding Shed / Carport)
 Total = 262.9 sq m / 2830 sq ft



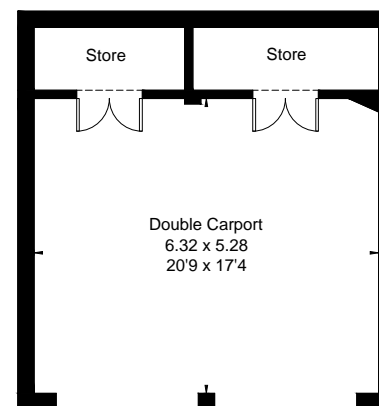
(Not Shown In Actual Location / Orientation)



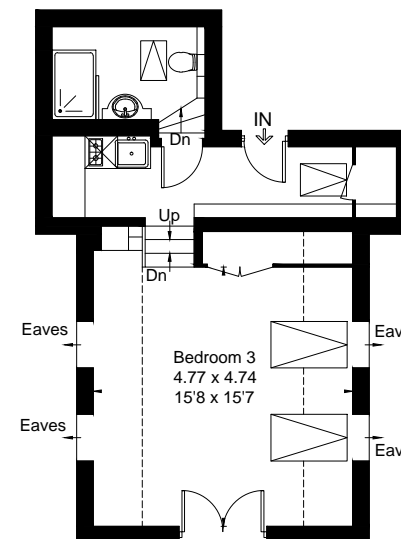
(Not Shown In Actual Location / Orientation)



(Not Shown In Actual Location / Orientation)

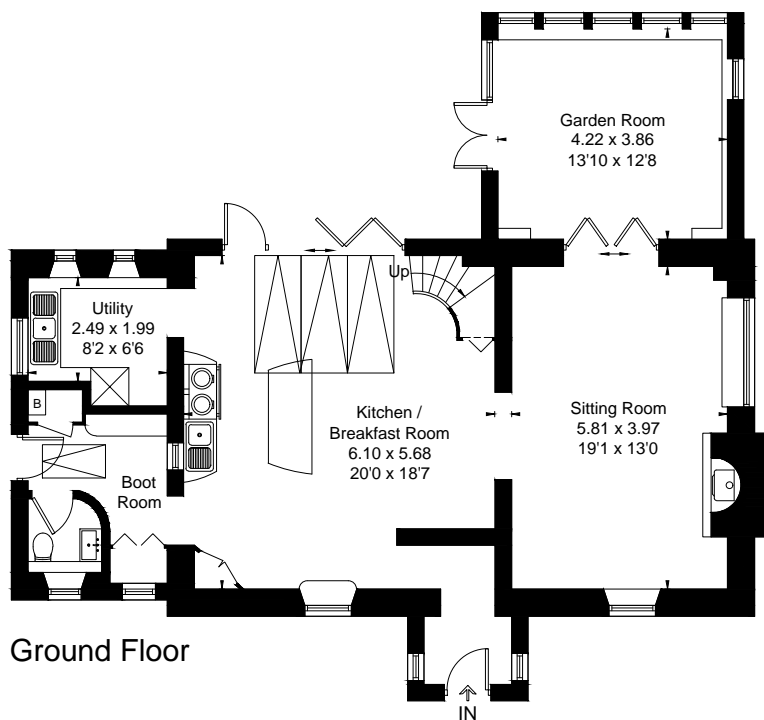


Outbuilding - Ground Floor
 (Not Shown In Actual Location / Orientation)

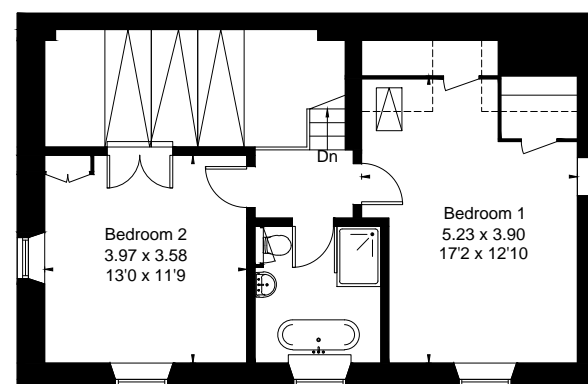


Outbuilding - First Floor

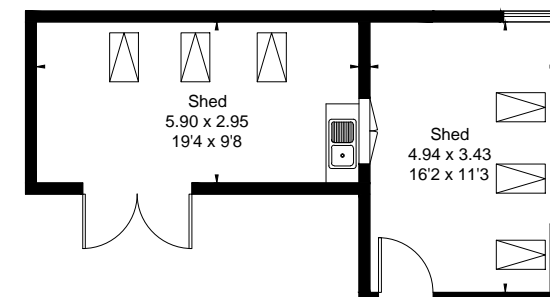
[] = Reduced head height below 1.5m



Ground Floor



First Floor



(Not Shown In Actual Location / Orientation)



This floor plan has been drawn in accordance with RICS Property Measurement 2nd edition.

All measurements, including the floor area, are approximate and for illustrative purposes only. @fourwalls-group.com #90083