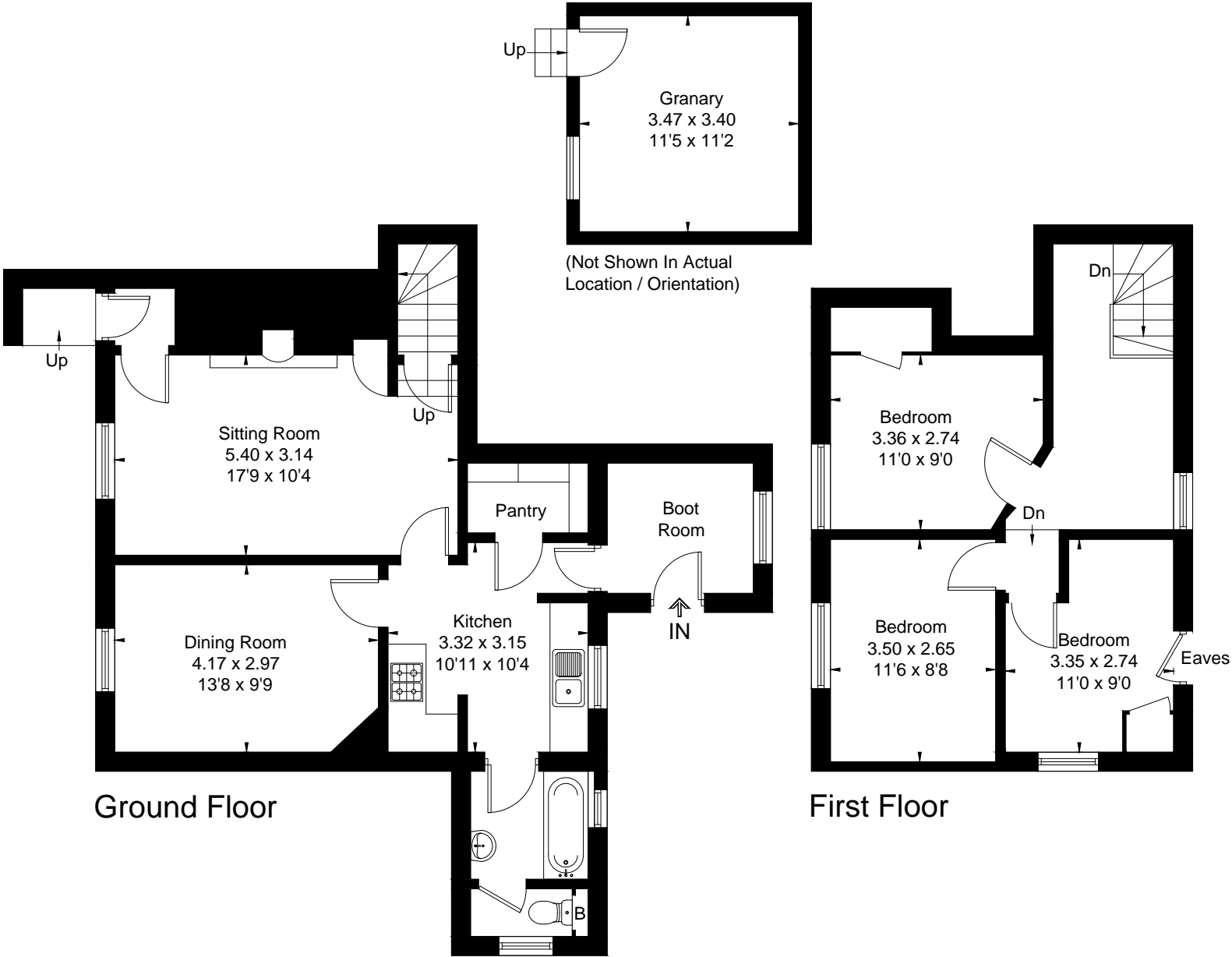


Approximate Floor Area = 99.1 sq m / 1067 sq ft
Granary = 11.7 sq m / 126 sq ft
Total = 110.8 sq m / 1193 sq ft



This floor plan has been drawn in accordance with RICS Property Measurement 2nd edition.
All measurements, including the floor area, are approximate and for illustrative purposes only. @fourwalls-group.com #82590