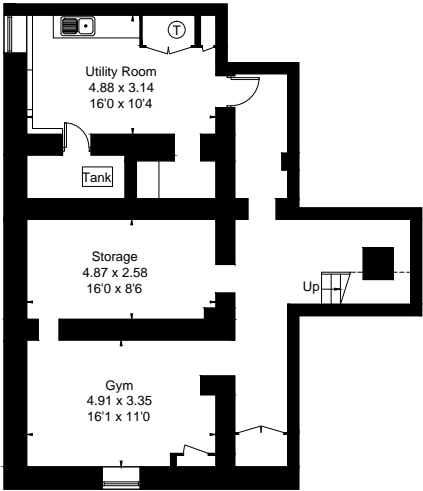
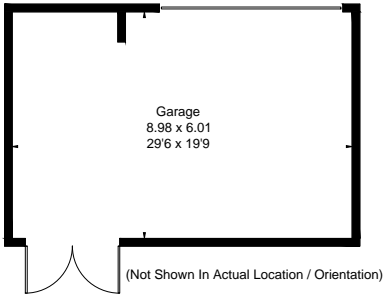


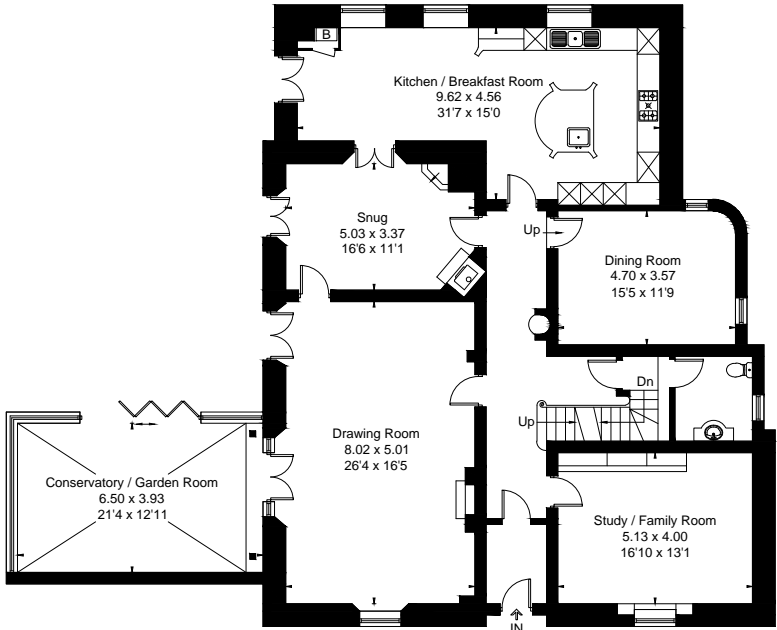
Approximate Floor Area = 486.8 sq m / 5240 sq ft
Outbuilding = 54 sq m / 581 sq ft
Total = 540.8 sq m / 5821 sq ft



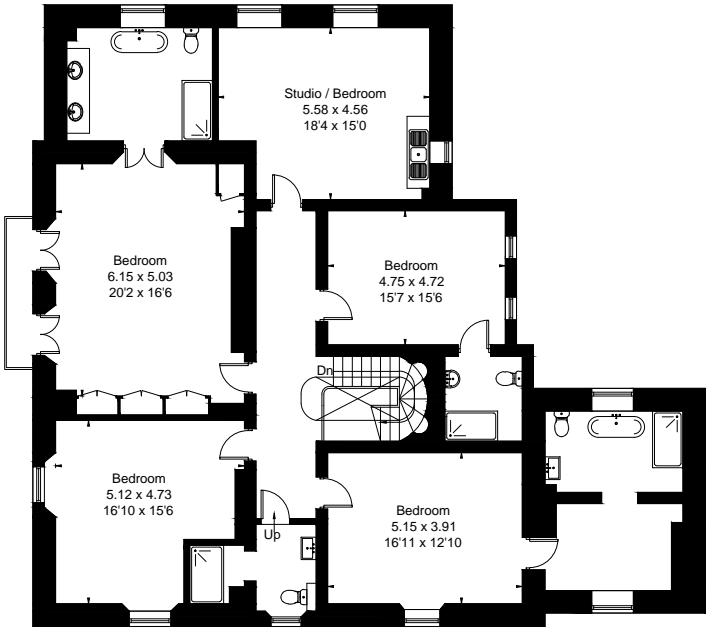
Lower Ground Floor



[Symbol] = Reduced head height below 1.5m



Ground Floor



First Floor



This floor plan has been drawn in accordance with RICS Property Measurement 2nd edition.
All measurements, including the floor area, are approximate and for illustrative purposes only. @fourwalls-group.com #77175