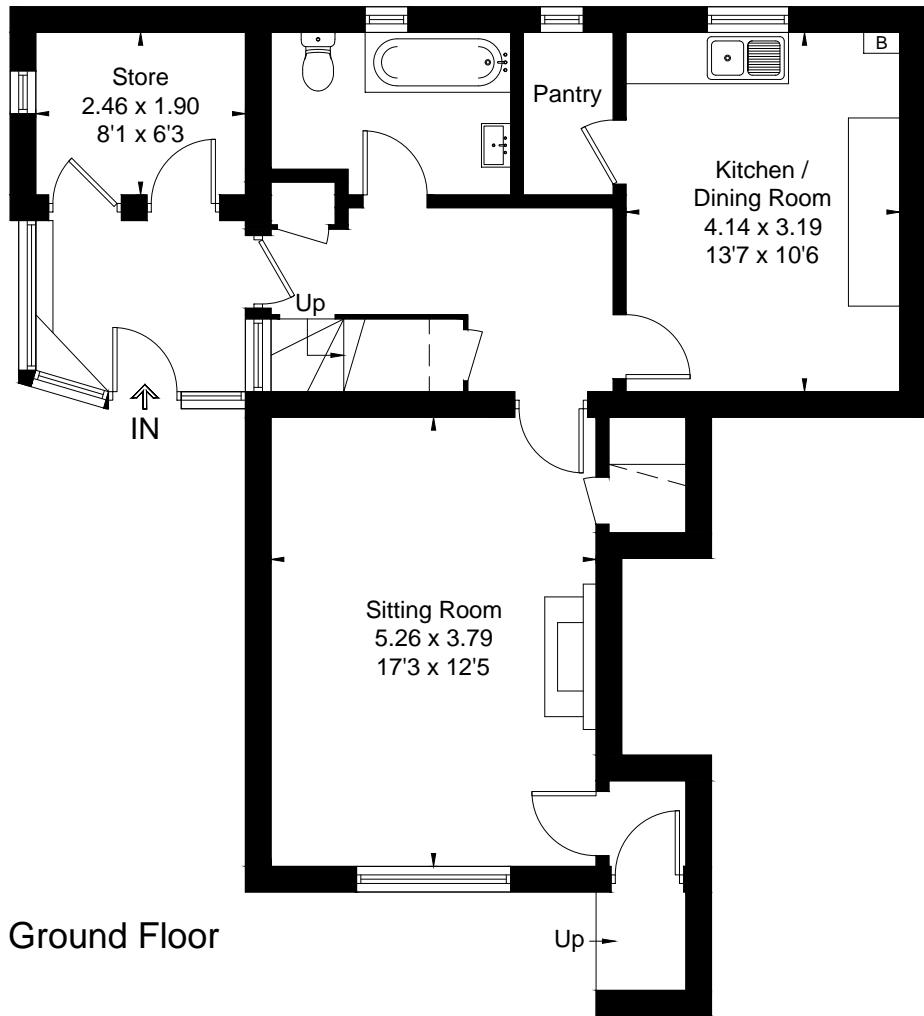


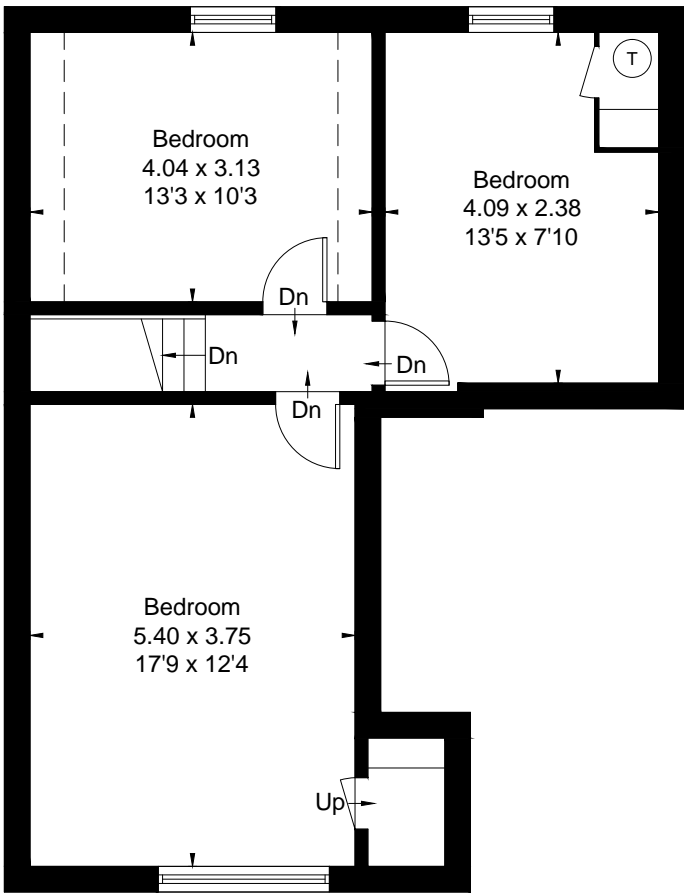
Approximate Floor Area = 119.6 sq m / 1287 sq ft
Garage = 16.1 sq m / 173 sq ft
Total = 135.7 sq m / 1460 sq ft



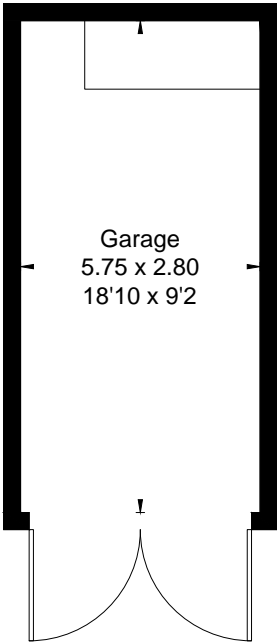
[] = Reduced head height below 1.5m



Ground Floor



First Floor



(Not Shown In Actual Location / Orientation)



This floor plan has been drawn in accordance with RICS Property Measurement 2nd edition.
All measurements, including the floor area, are approximate and for illustrative purposes only. @fourwalls-group.com #82590