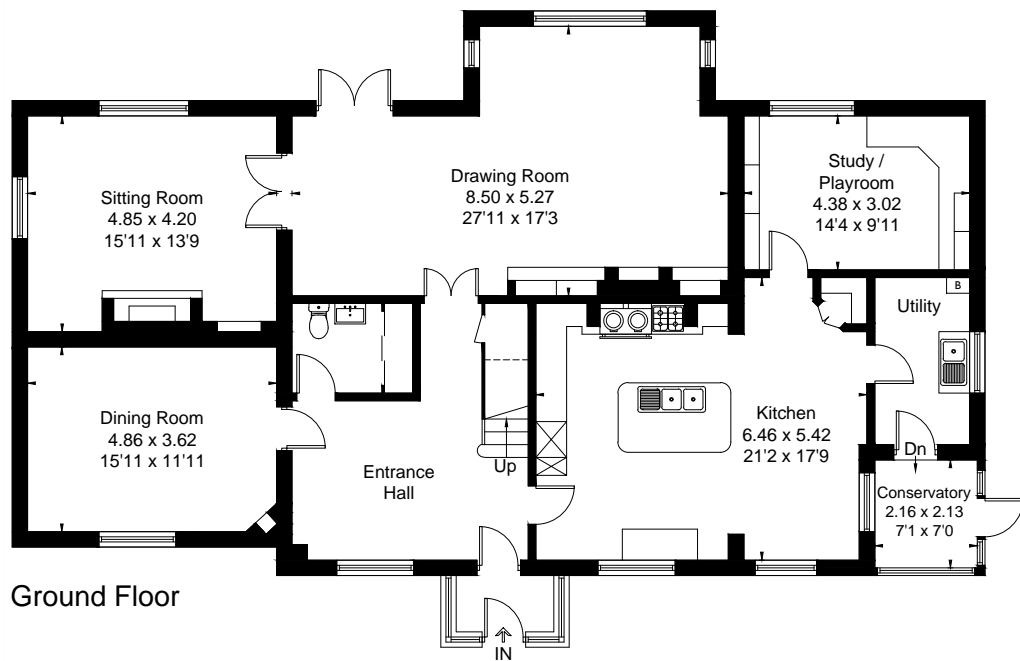
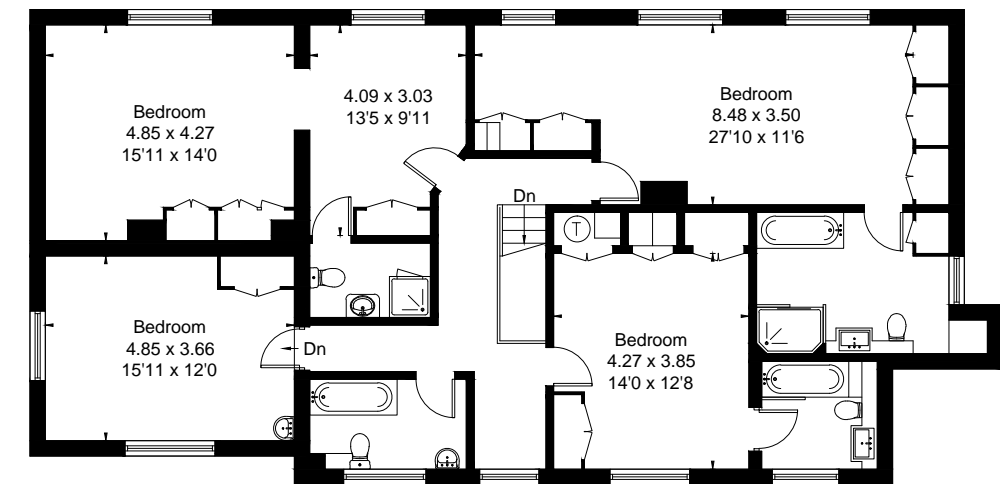
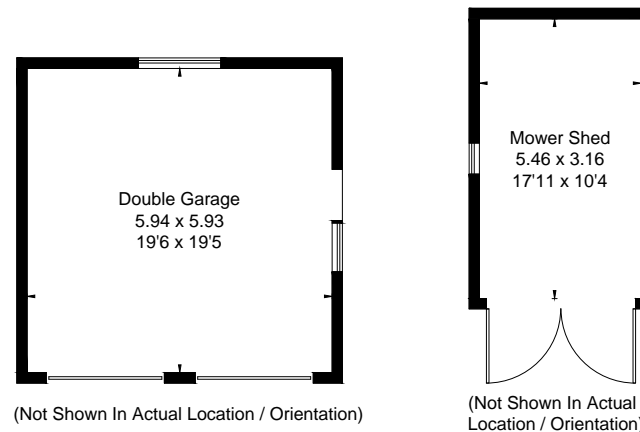


Approximate Floor Area = 313.6 sq m / 3375 sq ft  
Outbuildings = 52.4 sq m / 564 sq ft  
Total = 366 sq m / 3939 sq ft



Ground Floor



First Floor



This floor plan has been drawn in accordance with RICS Property Measurement 2nd edition.  
All measurements, including the floor area, are approximate and for illustrative purposes only. @fourwalls-group.com #88480