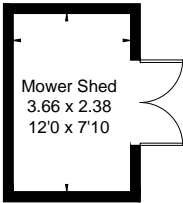
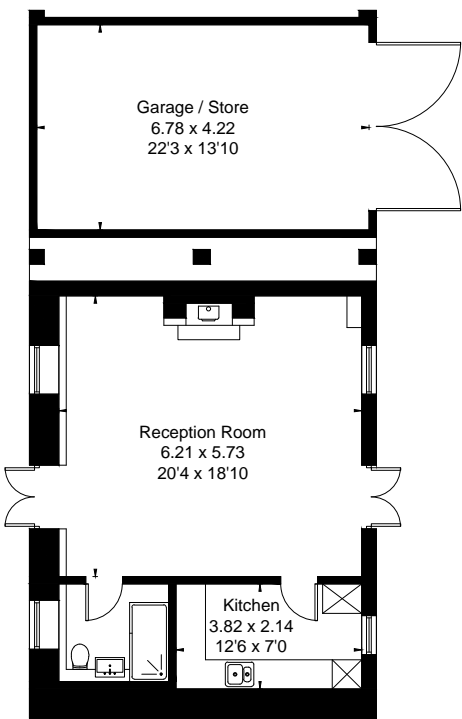
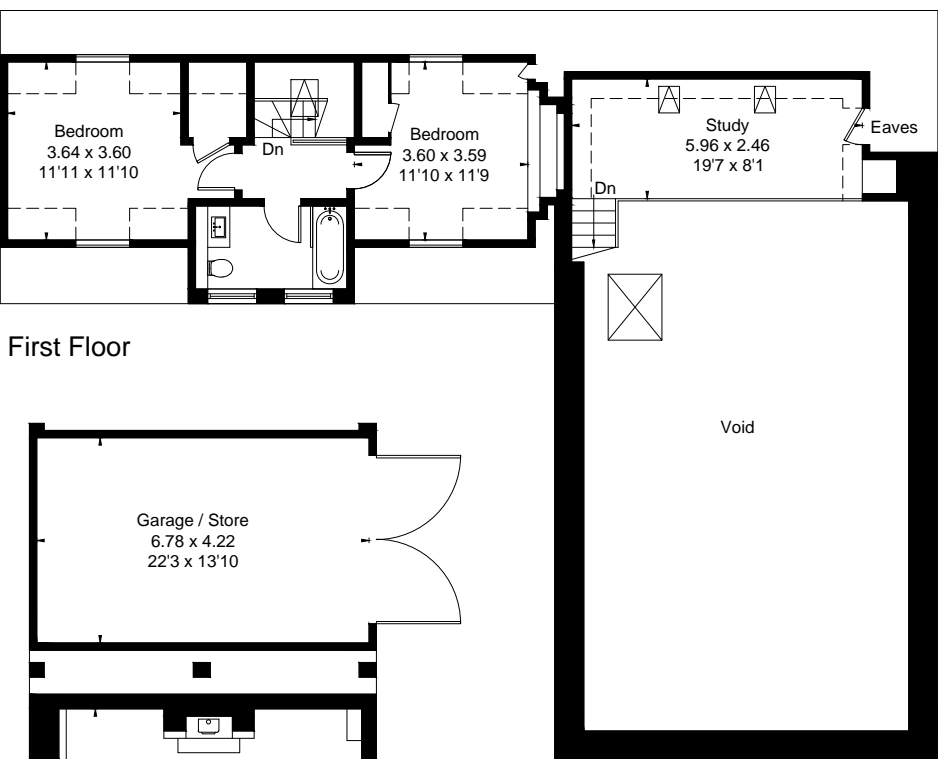
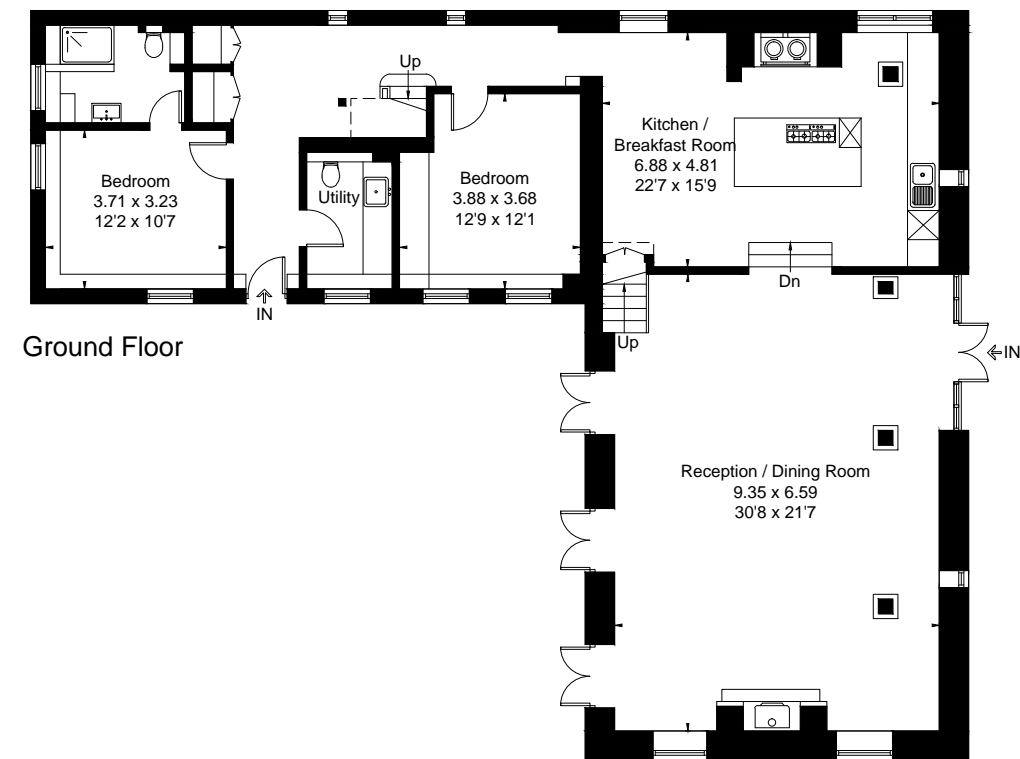


Approximate Floor Area = 219.5 sq m / 2363 sq ft
Outbuildings = 87.9 sq m / 946 sq ft
Total = 307.4 sq m / 3309 sq ft



[] = Reduced head height below 1.5m



(Not Shown In Actual Location / Orientation)

(Not Shown In Actual Location / Orientation)



This floor plan has been drawn in accordance with RICS Property Measurement 2nd edition.
All measurements, including the floor area, are approximate and for illustrative purposes only. @fourwalls-group.com #89014