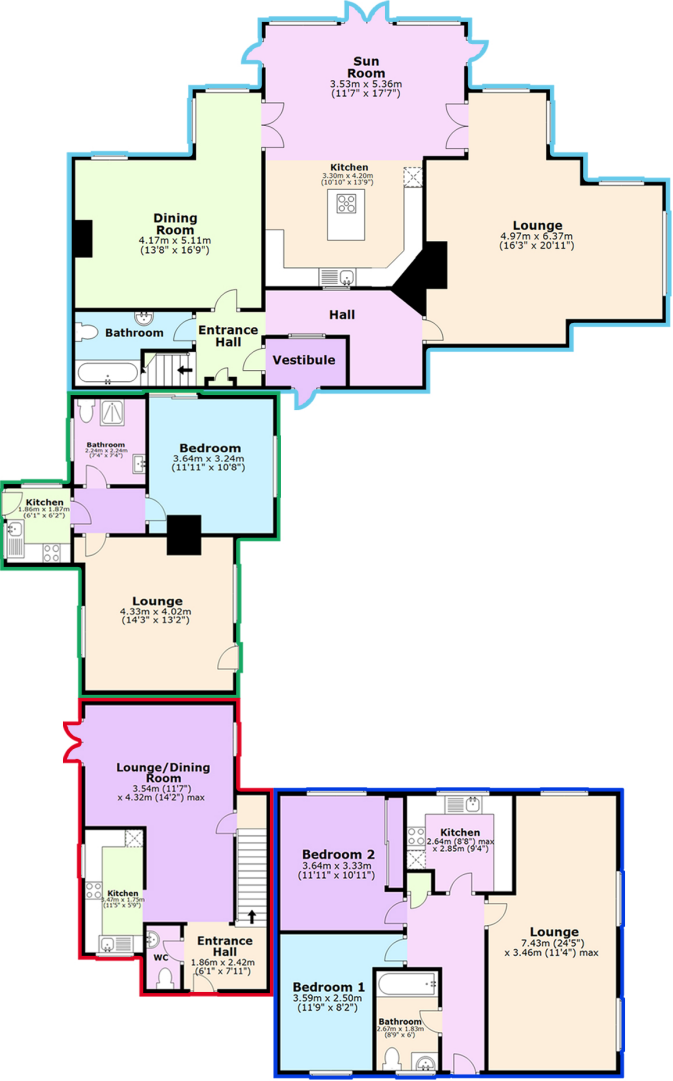
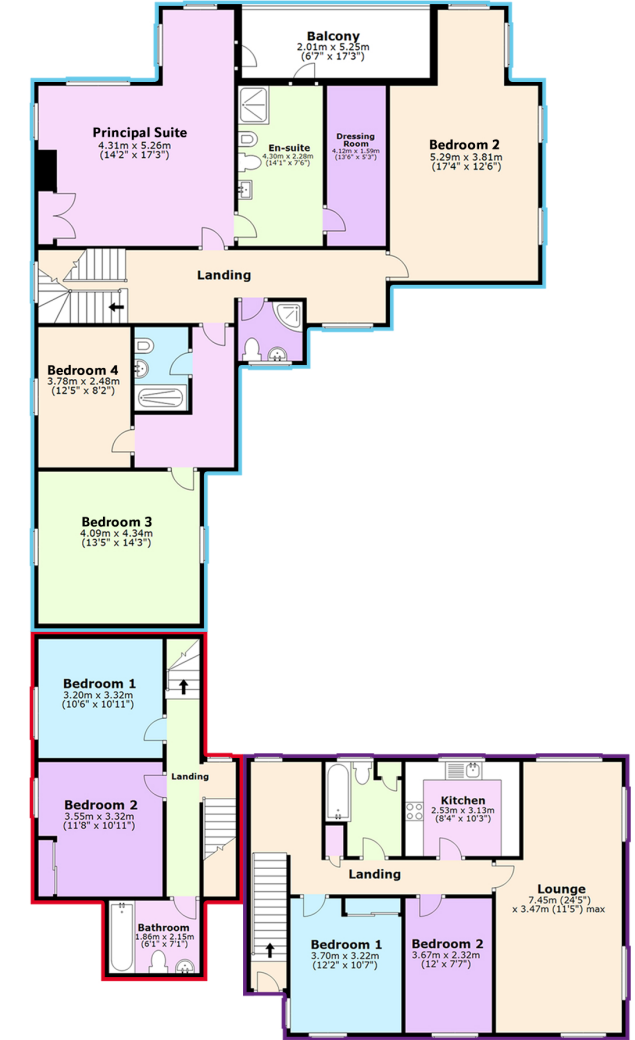


Ground Floor



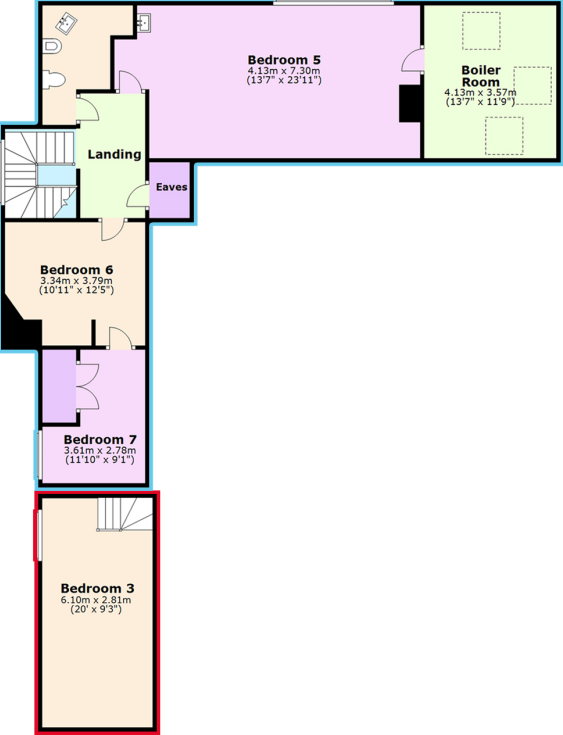
- Farm Lane House
Approx. 115.3 sq. metres (1240.8 sq. feet)
- Mariner's Cove
Approx. 42.2sq. metres (454.1 sq. feet)
- Quarterdeck
Approx. 40.9 sq metres (440.8 sq. feet)
- Farm Lane Apt
Approx. 73.5 sq. metres (791.2 sq. feet)

First Floor



- Farm Lane House
Approx. 128.0 sq. metres (1377.8 sq. feet)
- Quarterdeck
Approx. 38.0 sq metres (408.9 sq. feet)
- Knot's Landing
Approx. 74.8 sq. metres (804.7 sq. feet)

Second Floor



- Farm Lane House
Approx. 87.3 sq. metres (940.0 sq. feet)
- Quarterdeck
Approx. 17.1 sq metres (184.5 sq. feet)

Total area: approx. 617 sq. metres (approx 6641 sq. ft)

SKETCH PLAN FOR ILLUSTRATIVE PURPOSES ONLY. All measurements, walls, doors, windows, fittings and appliances, sizes and locations are approximate only. They cannot be regarded as being a representation by the seller, nor their agent. Plan produced by Silver Arch Property Solutions Limited.